



Castles

SLADE COURT  
Radlett WD7 7BT

# SLADE COURT

Radlett WD7 7BT

**£415,000**  
(Leasehold)

Castles



A well-presented two bedroom first floor apartment in this popular development for independent living for 55 and over, located right in the heart of Radlett Village.



You will find all the local amenities of the village high street, as well as Radlett Station with direct links to Central London, right on the doorstep.

Slade Court is a small and friendly development that benefits from a part-time manager, 24-hour emergency call system, excellent resident parking through-out and attractive landscaped gardens and Koi Carp pond. This leasehold apartment is one of only three that have a guest cloakroom and is available strictly to the 55 and over age group.

The property also benefits from a good size living/dining room with direct access to a private balcony, separate fitted kitchen, two bedrooms, modern shower room and excellent storage through-out and is being offered CHAIN FREE.

## Specifications

- Over 55 Development with Scheme Manager
- 2 Double Bedrooms
- Shower Room & Guest W.C.
- Modern Fitted Kitchen
- Spacious Reception Room
- Private Balcony
- Resident Parking
- Chain free



This property benefits from a well maintained residents communal area.



**A little about the corner of the world we call home...**

Radlett is an affluent village in Hertfordshire, located around 14 miles northwest of Central London. Known for its leafy streets and elegant homes, it offers a tranquil, upscale atmosphere while maintaining a friendly village feel. Radlett's high street is lined with independent boutiques, cafés, and restaurants, providing a relaxed yet refined local experience. The village is also close to several green spaces, including the lovely Phillimore Recreation Ground, and is popular with families and professionals looking for a peaceful retreat with easy access to amenities and nature.

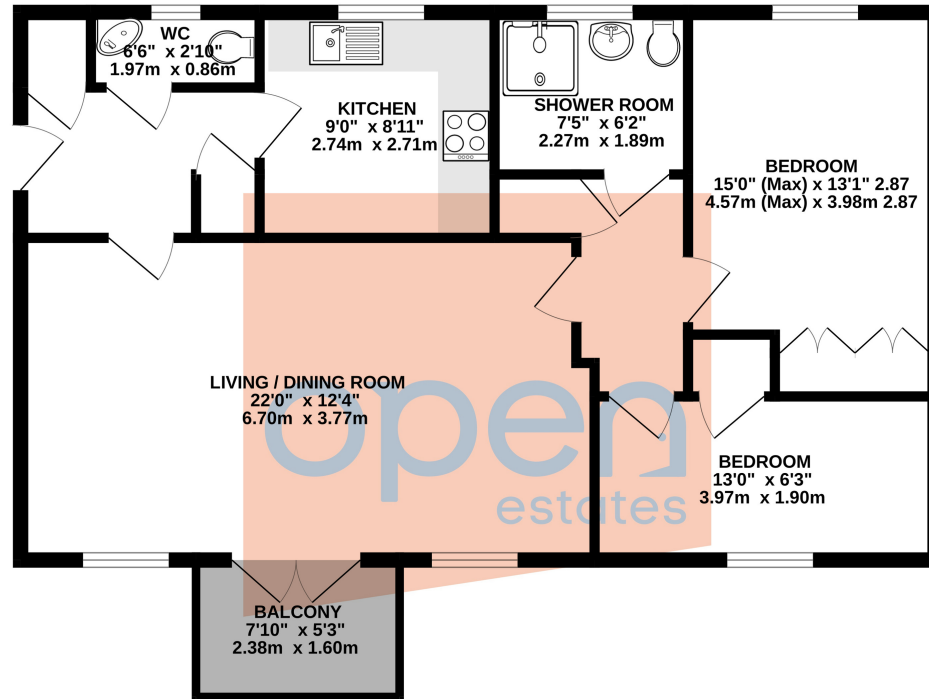
Despite its rural charm, Radlett is exceptionally well-connected to London. Radlett station, on the Thameslink line, offers direct train services to London St Pancras International in just under 25 minutes, making it ideal for commuters. The village is also conveniently located near the M25 and M1 motorways, offering quick access to other parts of Hertfordshire and beyond. With its blend of countryside living, excellent transport links, and a strong sense of community, Radlett is a sought-after location for those wanting the best of both rural and suburban life, with London just a short journey away.

**Please Note:**

We have not tested any apparatus, fixtures, fittings or services. Interested parties must undertake their own investigation into the working order of these items.

All measurements are approximate and photographs provided are for guidance only.

**FIRST FLOOR  
762 sq.ft. (70.8 sq.m.) approx.**



**Tenure: Leasehold**  
**Council Tax Band: F**  
**EPC Rating: D**

SLADE COURT, WATLING STREET, RADLETT, WD7 7BT

**TOTAL FLOOR AREA : 762 sq.ft. (70.8 sq.m.) approx.**

Whilst every attempt has been made to ensure the accuracy of the floorplan contained here, measurements of doors, windows, rooms and any other items are approximate and no responsibility is taken for any error, omission or mis-statement. This plan is for illustrative purposes only and should be used as such by any prospective purchaser. The services, systems and appliances shown have not been tested and no guarantee as to their operability or efficiency can be given.  
Made with MetroPix ©2025

**Berkhamsted**

01442 865252

**Eaton Bray**

01525 220605

**Borehamwood**

020 8953 2112

**Hertford**

01992 501511

**Boxmoor**

01442 233345

**Kings Langley**

01923 936900

**Bushey**

020 8950 2551

**Radlett**

01923 537111



**Castles**

[www.castlesestateagents.co.uk](http://www.castlesestateagents.co.uk)