



Castles

WINDSOR ROAD  
Pitstone, Buckinghamshire

WINDSOR ROAD  
Pitstone, Buckinghamshire

Asking  
Price  
**£400,000**  
(Freehold)

Castles



Situated in the ever popular Castlemead development within easy reach of Tring mainline station servicing London Euston.



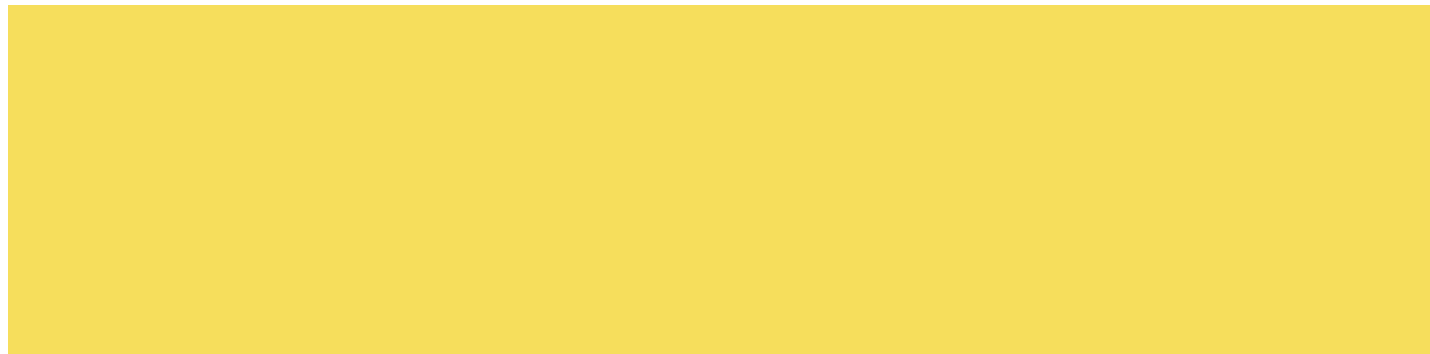
This 3 bedroom property has been updated by the current owners creating fantastic open plan living space which flows beautifully into the tree lined rear garden. Downstairs also benefits from a W.C. Upstairs the main bedroom offers 2 windows overlooking the rear garden and has a wealth of built in wardrobes. The second and third bedroom are similar in size giving well balanced accommodation, the top floor is concluded with a refitted bathroom. Externally the property enjoys the aforementioned private garden which is mainly lawned and enjoys 2 allocated parking spaces to the front.

**Specifications**

- Beautifully refurbished
- 3 Bedrooms
- Fantastic location
- Easy access to Tring Station
- Open plan living
- W.C
- Tree lined garden
- Grammar school catchment



Viewing of this property is highly recommended to fully appreciate the quality and position of this family home.



**Please Note:**

We have not tested any apparatus, fixtures, fittings or services. Interested parties must undertake their own investigation into the working order of these items.

All measurements are approximate and photographs provided are for guidance only.

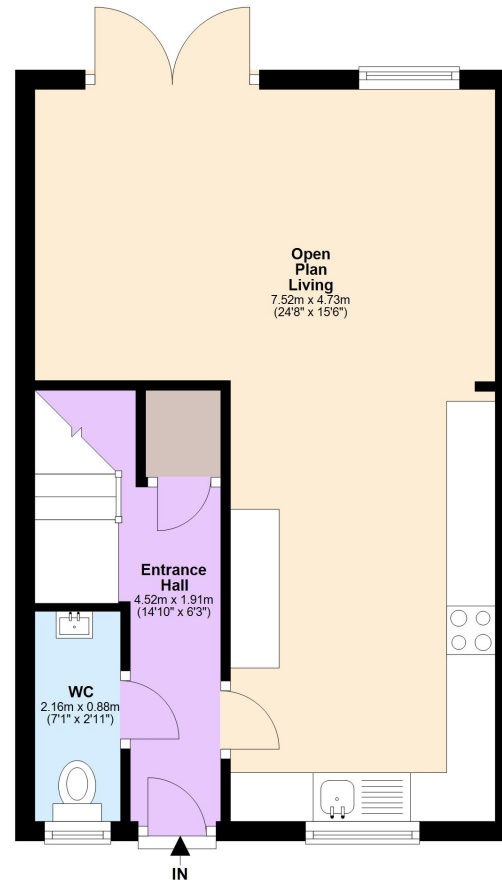
Tenure: Freehold

Council Tax Band: D

EPC Rating: C

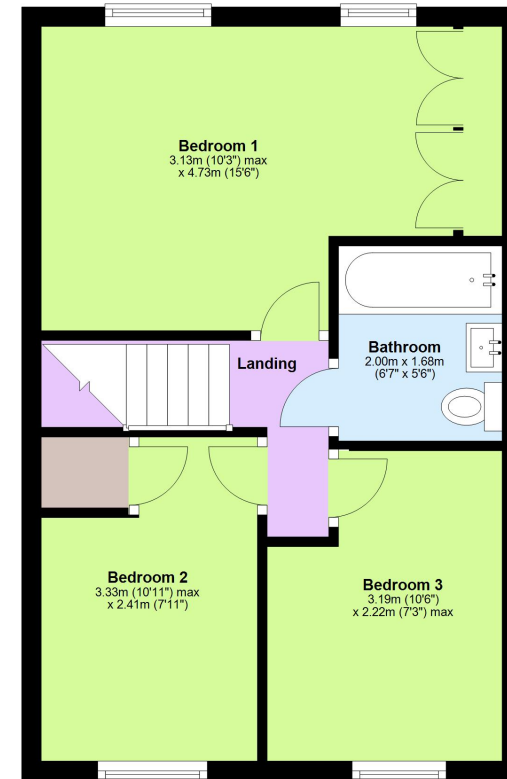
### Ground Floor

Approx. 35.6 sq. metres (383.7 sq. feet)



### First Floor

Approx. 35.9 sq. metres (386.9 sq. feet)



Total area: approx. 71.6 sq. metres (770.6 sq. feet)

This floorplan is not to scale. It's for guidance only and accuracy is not guaranteed.  
Plan produced using PlanUp.

**Berkhamsted Office:** 148 High Street, Berkhamsted, Hertfordshire HP4 3AT **Tel: 01442 865252**

**Boxmoor Office:** 33 St John's Road, Hemel Hempstead, Hertfordshire HP1 1QQ **Tel: 01442 233345**

**Eaton Bray Office:** 2a Wallace Drive, Eaton Bray, Dunstable LU6 2DF **Tel: 01525 220605**

**Kings Langley Office:** 1 High Street, Kings Langley, Hertfordshire WD4 8AB **Tel: 01923 936900**

**Associated London Office:** 121 Park Lane, Mayfair, London W1K 7QG **Tel: 020 7079 1595**

[www.castlestateagents.co.uk](http://www.castlestateagents.co.uk)



# Castles