



Castles

ST MARYS GLEBE
Edlesborough, Buckinghamshire

ST MARYS GLEBE

Edlesborough, Buckinghamshire

Asking
Price
£700,000
(Freehold)

Castles



Positioned in the heart of Edlesborough with views over the green this detached family home has been updated by the current owners to the highest of standards.

 4  2  2  Off Street

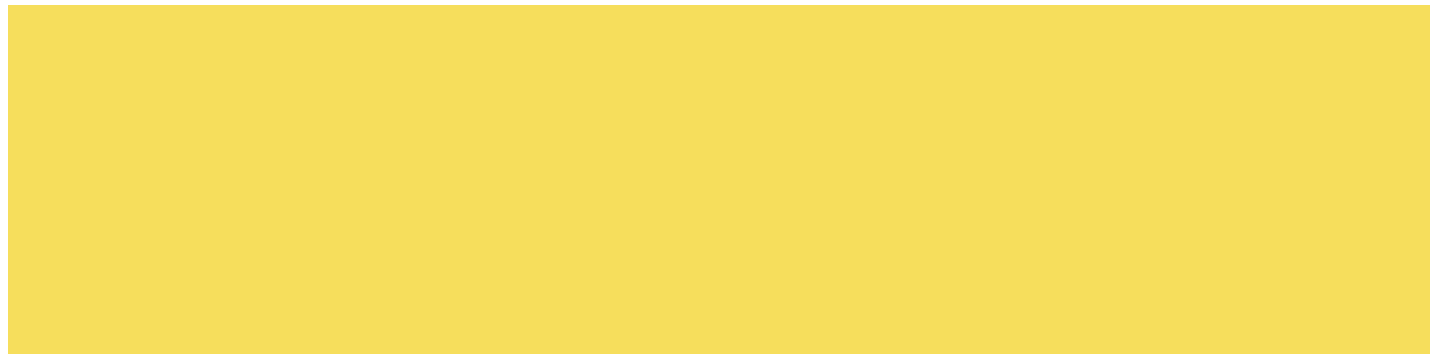
The beautifully presented accommodation comprises of a generous entrance leading to an oversized utility room with built in full height freezer and W.C. To the rear of the property is an impressive, refitted kitchen diner boasting breakfast bar, built in Neff double oven and hob along with patio door spilling out to the rear garden. From the dining area there is a doubled sided glass cased fireplace separating the lounge with a bay window and additional fireplace. The space downstairs is open yet with clearly defined areas. Upstairs the impressive accommodation continues with generous bedrooms and refitted family bathroom and en suite with double shower.

Specifications

- Fantastic condition throughout
- 4 Generous bedrooms
- Refitted En Suite
- Refitted family bathroom
- High spec kitchen
- Over sized utility
- Centrally located within the village
- Grammar school catchment



Externally the property benefits from blocked paved driveway parking and rear garden.



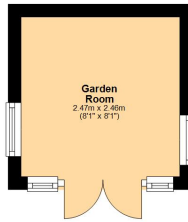
Please Note:

We have not tested any apparatus, fixtures, fittings or services. Interested parties must undertake their own investigation into the working order of these items.

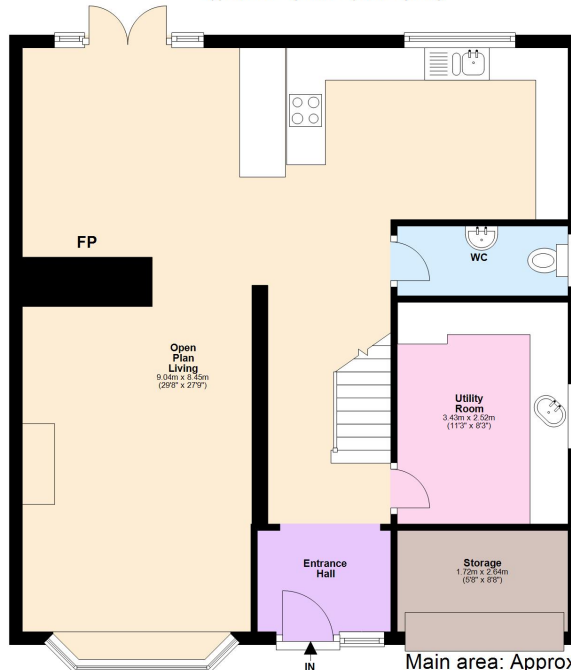
All measurements are approximate and photographs provided are for guidance only.

Tenure: Freehold
Council Tax Band: F
EPC Rating: D

Outbuilding
Main area: approx. 0.0 sq. metres (0.0 sq. feet)
Plus outbuildings, approx. 6.1 sq. metres (65.4 sq. feet)



Ground Floor
Approx. 79.7 sq. metres (858.1 sq. feet)



Main area: Approx. 149.4 sq. metres (1608.6 sq. feet)
Plus outbuildings, approx. 6.1 sq. metres (65.4 sq. feet)

This floorplan is not to scale. It's for guidance only and accuracy is not guaranteed.
Plan produced using PlanUp.

First Floor
Approx. 69.7 sq. metres (750.5 sq. feet)



Berkhamsted Office: 148 High Street, Berkhamsted, Hertfordshire HP4 3AT **Tel: 01442 865252**
Boxmoor Office: 33 St John's Road, Hemel Hempstead, Hertfordshire HP1 1QQ **Tel: 01442 233345**
Eaton Bray Office: 2a Wallace Drive, Eaton Bray, Dunstable LU6 2DF **Tel: 01525 220605**
Kings Langley Office: 1 High Street, Kings Langley, Hertfordshire WD4 8AB **Tel: 01923 936900**
Associated London Office: 121 Park Lane, Mayfair, London W1K 7QG **Tel: 020 7079 1595**

www.castlestateagents.co.uk



Castles