



Castles

THE PASTURES  
Edlesborough, Buckinghamshire



# THE PASTURES

Edlesborough, Buckinghamshire

Asking  
Price  
**£410,000**  
(Freehold)

Castles



Entering the market for the first time since being built this 3 bedroom linked detached is offered with no upper chain.



Positioned at the bottom of a cul de sac in a lovely setting within Edlesborough. The property benefits from W.C, front to back lounge diner, kitchen with built in 5 ring Neff hob, 3 bedrooms and family bathroom. Externally the property enjoys a private rear garden, driveway parking and garage.

## Specifications

- 3 Bedroom
- Link detached
- No upper chain
- Garage
- Driveway
- Private garden
- W.C
- Grammar school catchment





The property also sits within The Grammar school catchment and in walking distance to the village school.



#### **A little about the corner of the world we call home...**

We are lucky to be situated on the borders of Bedfordshire and Buckinghamshire, with views of the area which extend from Eaton Bray into the parish of Edlesborough and outlying villages.

The name 'Eaton' derives from the old English 'eitone', meaning 'farm by a river'. In the Domesday Book it was listed just as Eitone while 'Bray' comes from Sir Reginald Bray and the family that once owned the manor located at what is today 'Park Farm'. At one time Eaton Bray had a moated castle at the farm and what remains of it is now open to the public for fishing.

The village also houses the 'Coffee Tavern' which was built by a teetotal vicar of the parish to encourage the villagers out of the local public houses and was financed by the Wallace family known for their nurseries which grew famous carnations. Many of the roads in the area are named after them.

Edlesborough is next to Eaton Bray, just over the county boundary in Bedfordshire – about 3 miles (5 km) west-south-west of Dunstable. It offers easy commuting with train

travel times from nearby Cheddington to London Euston around 45 minutes. Luton Airport is just over 8 miles away.

There are also good education opportunities with the Eaton Bray and Edlesborough Academies nearby for primary schooling while the area is within the catchment for a number of good secondary schools.

As well as the village of Edlesborough itself, the civil parish also includes the hamlets of Dagnall, Northall and part of Ringshall. Hudnall was transferred in 1885 to the parish of Little Gaddesden in Hertfordshire. Other villages in the area include Totternhoe, Slapton, Northall, Whipsnade – famous for its zoo-, Studham and Invinghoe Aston.

All offer the benefits of a semi-rural environment with close proximity to a wide range of facilities. There are many areas of natural beauty and open spaces such as the Dunstable Downs and Gateway Centre and Mead Open Farm.

With close proximity to larger towns such as Berkhamsted, Tring, Luton, St Albans and Milton Keynes the areas around Eaton Bray mix the convenience of modern living with the benefits of semi-rural living.



**Please Note:**

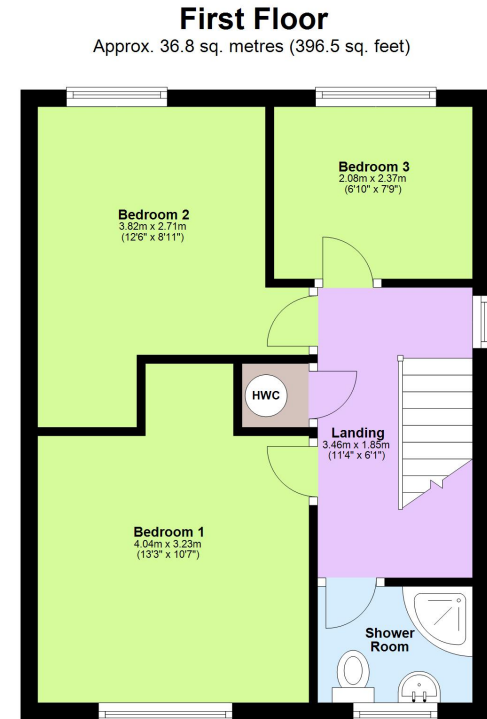
We have not tested any apparatus, fixtures, fittings or services. Interested parties must undertake their own investigation into the working order of these items.

All measurements are approximate and photographs provided are for guidance only.

Tenure: Freehold

Council Tax Band: C

EPC Rating: TBC



Total area: approx. 93.0 sq. metres (1001.0 sq. feet)

This floorplan is not to scale. It's for guidance only and accuracy is not guaranteed.  
Plan produced using PlanUp.

**Berkhamsted**

01442 865252

**Eaton Bray**

01525 220605

**Borehamwood**

020 8953 2112

**Hertford**

01992 501511

**Boxmoor**

01442 233345

**Kings Langley**

01923 936900

**Bushey**

020 8950 2551

**Radlett**

01923 537111



**Castles**

[www.castlestateagents.co.uk](http://www.castlestateagents.co.uk)