



Castles

OBSERVATORY LODGE
Whipsnade, Central Bedfordshire

OBSERVATORY LODGE

Whipsnade, Central Bedfordshire

Asking Price
£1,350,000
(Freehold)

Castles



Sit within a beautiful tranquil setting, this impressive property has been extensively remodelled and updated by the current owners to the highest of standards.

 4  3  3  Off Street

Tucked away on a private plot with open views of fields, this impressive family home offers tremendous, flexible accommodation to suit a mixture of buyers.

As you approach the property along a private driveway, you're instantly struck by its privacy and positioning within the village. A real hidden gem that must be viewed to be fully appreciated.

The property sits centrally within its plot with a wraparound garden which has been professionally designed and landscaped with distinctive zones - from the Mediterranean inspired patio with high quality porcelain tiles to the vegetable garden with fruit trees and raised beds fitted with irrigation system - all enjoying views over the surrounding open countryside.

As you enter the property you are greeted by a generous entrance hall with access to a cloakroom and three separate reception spaces all offering flexible accommodation. These are currently being used as an office, study, and family room which also benefits from a refitted en-suite, perfect to be used as an additional bedroom if/when required.

To the front of the home is undoubtedly the showpiece of living accommodation. The triple-glazed, triple aspect open plan kitchen family diner offers tremendous social space and enjoys under floor heating throughout.

Specifications

- Fantastic location
- Views over open fields
- Refurbished
- Open plan kitchen family diner
- Flexible accommodation
- 2 En suites
- Private position

The generous space includes the lounge area, the oversized dining space with vaulted ceilings and large patio doors out onto the manicured garden and the high-quality kitchen fully fitted with island, integrated larder unit with matching Neolith worktop, high specification fittings including Barazza double ovens/microwave, built in Fisher & Paykel wine fridge, integrated Miele dishwasher and Quooker instant boiling tap. Completing the downstairs is a good size utility room boasting a dog shower and access to the garden. Ascending the oak staircase to the first floor, you'll find a galleried landing giving access to two double bedrooms, a refitted family bathroom and the principal bedroom offering refitted en-suite, dressing area with built in wardrobes and spectacular views of the surrounding countryside courtesy of its triple aspect.

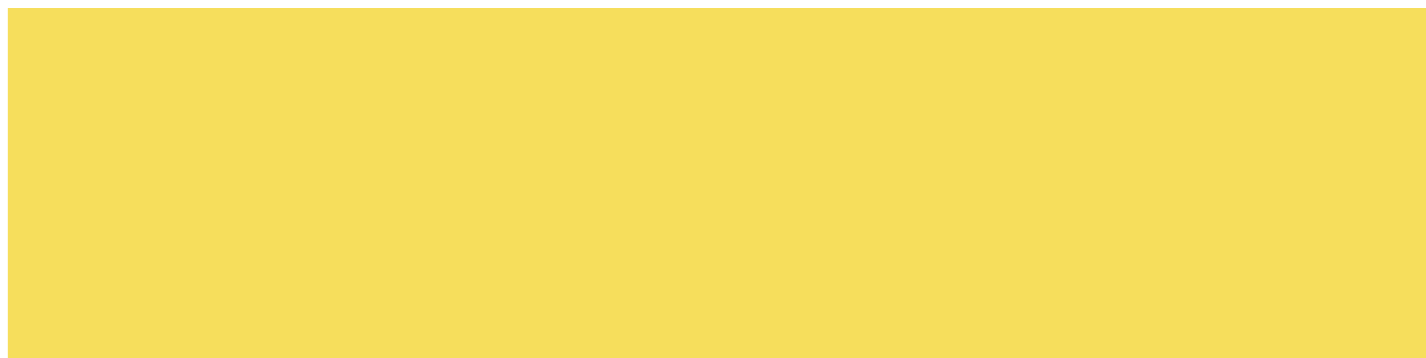
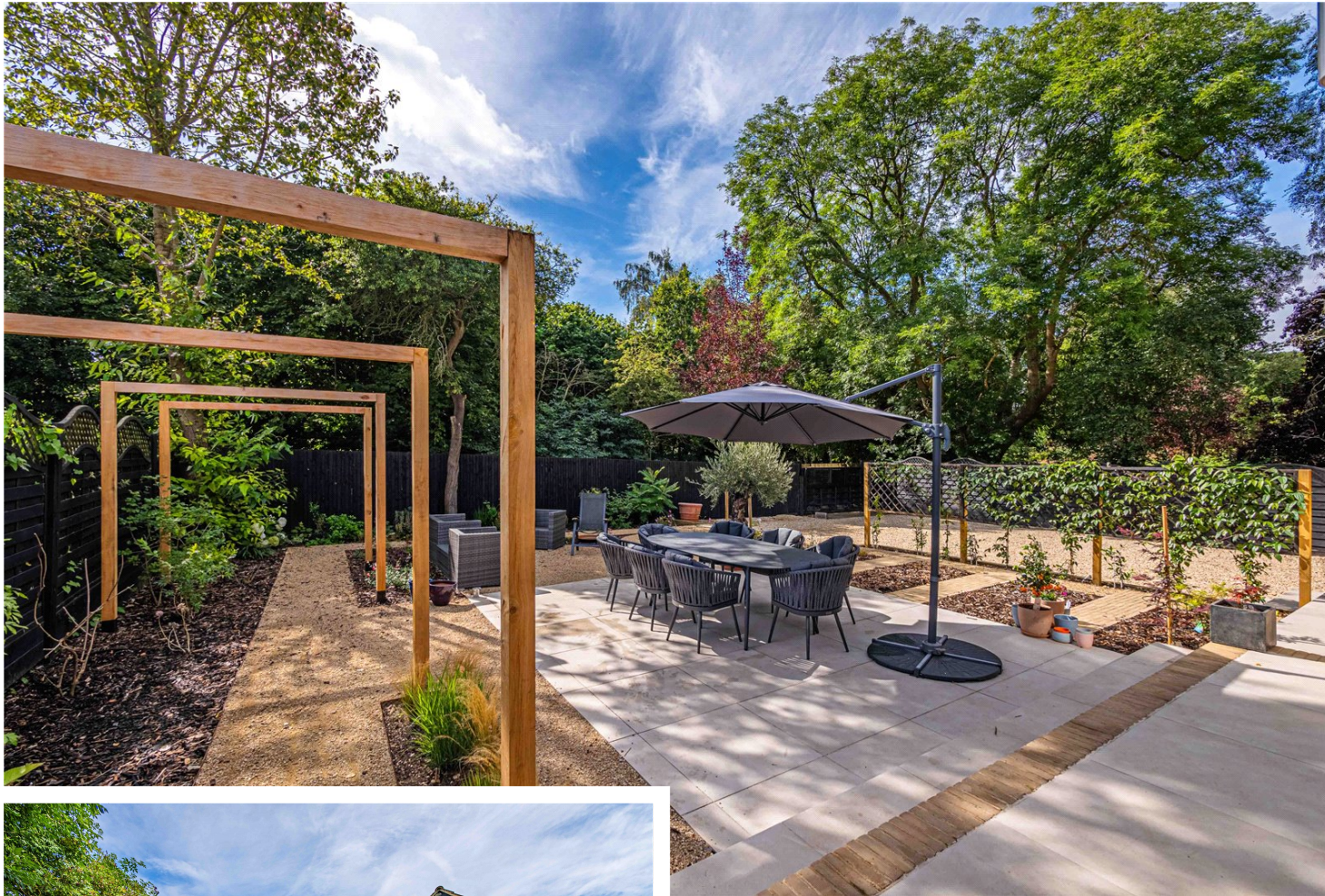
This home offers the perfect blend of a trendy and modern home in an idyllic location.

The property has excellent eco credentials, with solar panels, air source heat pump (fitted in 2021), triple glazed windows and Mechanical Ventilation Heat Recovery system. It also boasts a three phase electricity supply and cables provisioned outside for a high speed electric vehicle charging point to be easily installed in the future.

The property also benefits from extensive driveway parking behind the gated entrance and what was previously the double garage has been converted into a home studio with loft space and offers the perfect opportunity, subject to the necessary planning consents, to create a detached annex.







Please Note:

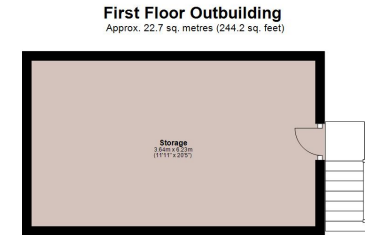
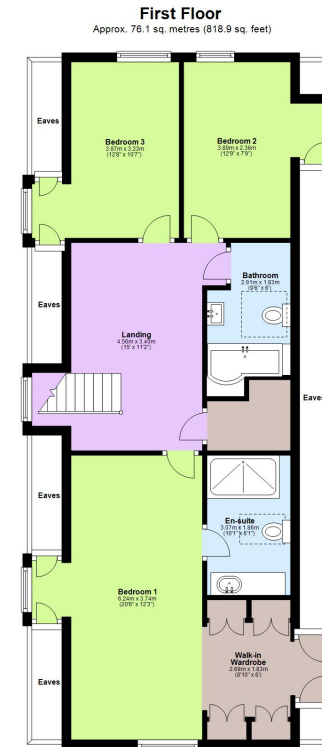
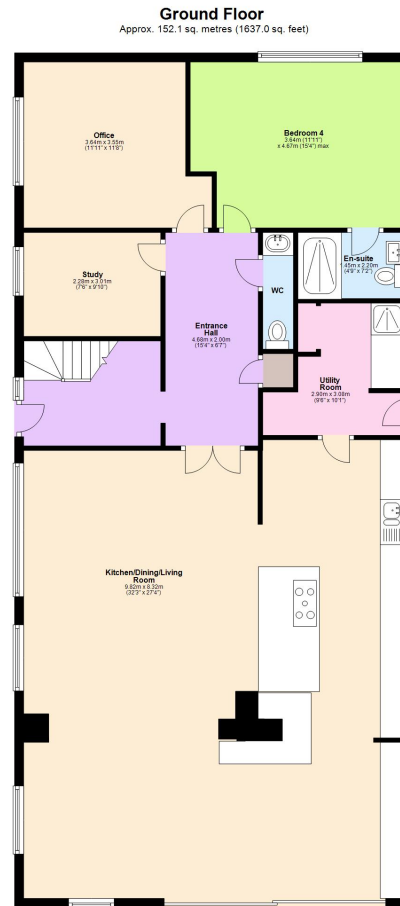
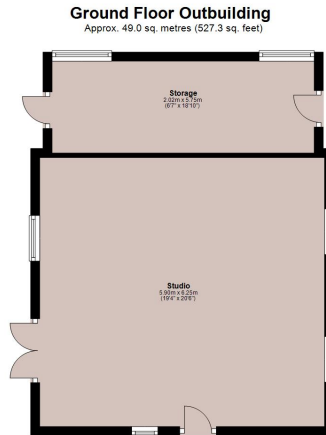
We have not tested any apparatus, fixtures, fittings or services. Interested parties must undertake their own investigation into the working order of these items.

All measurements are approximate and photographs provided are for guidance only.

Tenure: Freehold

Council Tax Band: E

EPC Rating: TBC



Total area: approx. 299.8 sq. metres (3227.4 sq. feet)

This floorplan is not to scale. It's for guidance only and accuracy is not guaranteed.
Plan produced using PlanUp.

Berkhamsted Office: 148 High Street, Berkhamsted, Hertfordshire HP4 3AT **Tel: 01442 865252**

Boxmoor Office: 33 St John's Road, Hemel Hempstead, Hertfordshire HP1 1QQ **Tel: 01442 233345**

Eaton Bray Office: 2a Wallace Drive, Eaton Bray, Dunstable LU6 2DF **Tel: 01525 220605**

Kings Langley Office: 1 High Street, Kings Langley, Hertfordshire WD4 8AB **Tel: 01923 936900**

Associated London Office: 121 Park Lane, Mayfair, London W1K 7QG **Tel: 020 7079 1595**

www.castlestateagents.co.uk



Castles