



Castles

CASTLE HILL ROAD  
Totterhoe, Bedfordshire



# CASTLE HILL ROAD

## Totternhoe, Bedfordshire

**Guide Price**  
**£400,000**  
(Freehold)

# Castles



Offered to the market with breath taking, 180 degree views to the front, this 3 double bedroom extended family home requires modernization throughout and is being sold with no upper chain.



With a generous plot to both front and rear this property is perfect for someone looking to create a fantastic family home. The accommodation comprises entrance hall leading to lounge with opening into dining space with patio doors to the rear garden. Kitchen and integral garage which could be converted to create additional living space. Upstairs the 3 double bedrooms and 4 piece family bathroom are well proportioned with the main bedroom benefiting from sliding patio doors onto a veranda enjoying the spectacular views.

### Specifications

- 3 Double Bedrooms
- Stunning views
- In need of updating
- Extended
- Driveway
- Garage
- Generous plot





To the front of the property is a good sized frontage and driveway parking leading to the garage

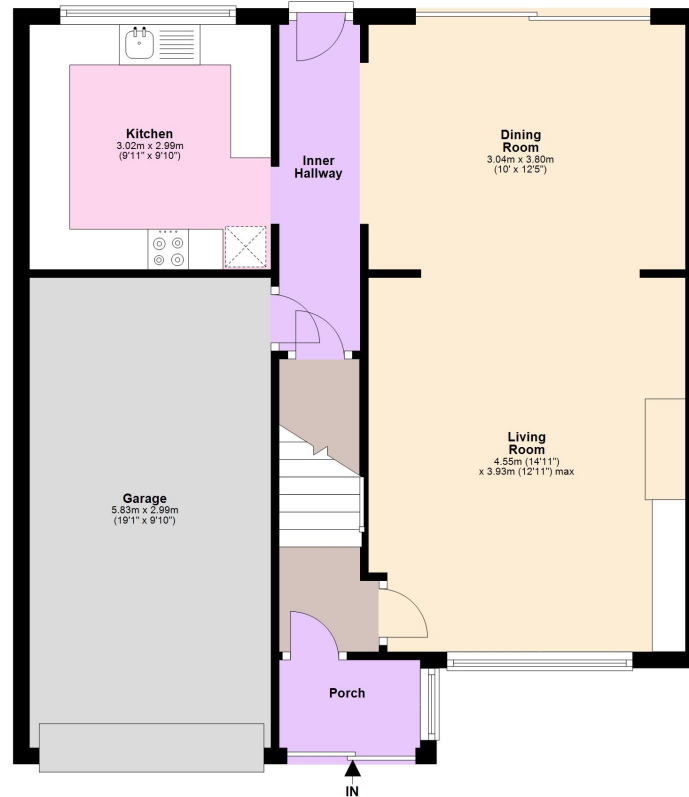


**Please Note:**

We have not tested any apparatus, fixtures, fittings or services. Interested parties must undertake their own investigation into the working order of these items.

All measurements are approximate and photographs provided are for guidance only.

**Ground Floor**  
Approx. 68.5 sq. metres (736.8 sq. feet)



**First Floor**  
Approx. 54.1 sq. metres (582.3 sq. feet)



Tenure: Freehold  
Council Tax Band: C  
EPC Rating: D

Total area: approx. 122.6 sq. metres (1319.1 sq. feet)

This floorplan is not to scale. It's for guidance only and accuracy is not guaranteed.  
Plan produced using PlanUp.

**Berkhamsted Office:** 148 High Street, Berkhamsted, Hertfordshire HP4 3AT **Tel: 01442 865252**  
**Boxmoor Office:** 33 St John's Road, Hemel Hempstead, Hertfordshire HP1 1QQ **Tel: 01442 233345**  
**Eaton Bray Office:** 2a Wallace Drive, Eaton Bray, Dunstable LU6 2DF **Tel: 01525 220605**  
**Kings Langley Office:** 1 High Street, Kings Langley, Hertfordshire WD4 8AB **Tel: 01923 936900**  
**Associated London Office:** 121 Park Lane, Mayfair, London W1K 7QG **Tel: 020 7079 1595**  
[www.castlestateagents.co.uk](http://www.castlestateagents.co.uk)



Castles