



Castles

BADGERS MOUNT , CHALK HILL  
Dunstable, Bedfordshire

# BADGERS MOUNT , CHALK HILL

Dunstable, Bedfordshire

**Asking  
Price**  
**£500,000**  
(Freehold)

Castles



Positioned along a lane, this property offers a wealth of privacy and outdoor space.



In need of modernisation and offering tremendous scope to extend (STPP) the property is also offered to the market with no upper chain .

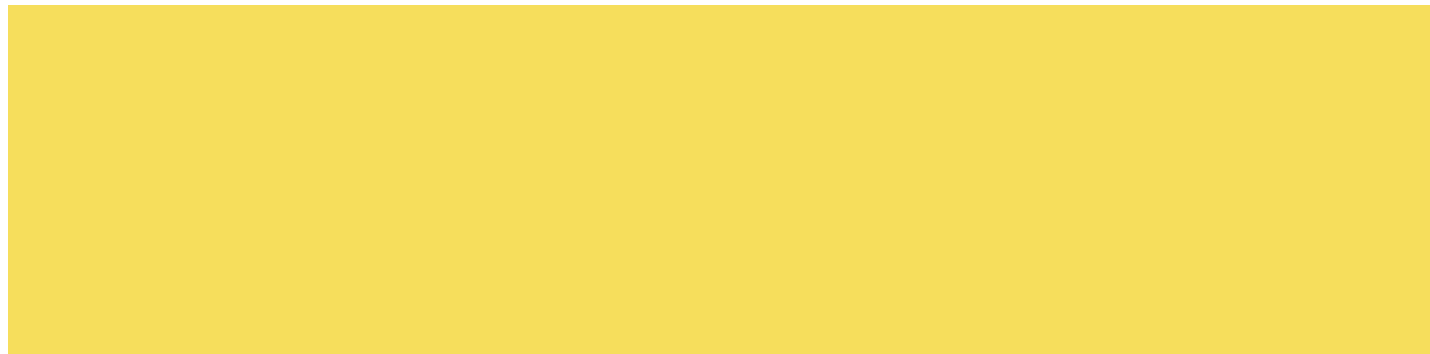
This 2-bedroom detached bungalow is perfectly situated on an expansive plot surrounded by countryside yet with great access to the M1. There is a generously sized kitchen/diner, with access to the family bathroom. The oversized triple aspect living room provides ample space and is located at the other end of the property. The two well proportioned bedrooms are located centrally.

## Specifications

- Fantastic opportunity to develop (STPP)
- No Upper chain
- Detached bungalow
- Outbuildings
- Generous plot
- Extensive driveway
- Kitchen Diner



Outside, the property has a detached double garage, additional driveway parking and additional storage space.



**Please Note:**

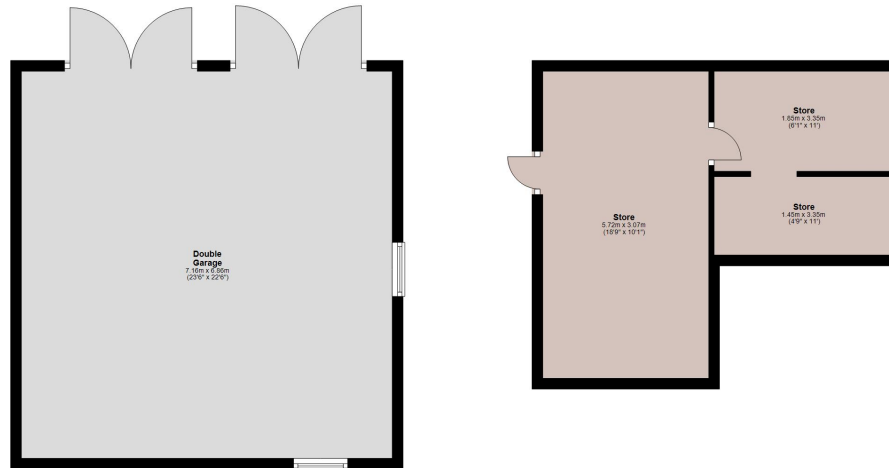
We have not tested any apparatus, fixtures, fittings or services. Interested parties must undertake their own investigation into the working order of these items.

All measurements are approximate and photographs provided are for guidance only.

Tenure: Freehold  
Council Tax Band: F  
EPC Rating: E

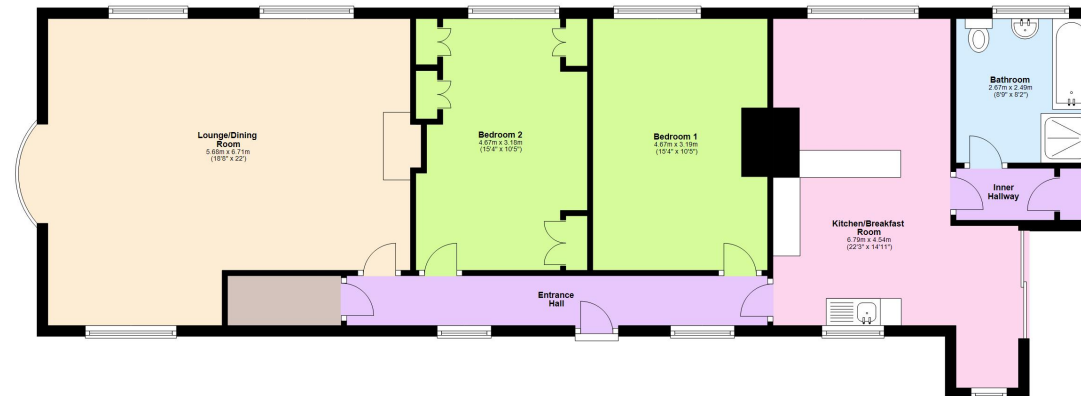
**Outbuilding**

Approx. 78.4 sq. metres (844.0 sq. feet)



**Ground Floor**

Approx. 108.5 sq. metres (1167.6 sq. feet)



Total area: approx. 186.9 sq. metres (2011.6 sq. feet)

This floorplan is not to scale. It's for guidance only and accuracy is not guaranteed.  
Plan produced using PlanUp.

**Berkhamsted Office:** 148 High Street, Berkhamsted, Hertfordshire HP4 3AT **Tel: 01442 865252**  
**Boxmoor Office:** 33 St John's Road, Hemel Hempstead, Hertfordshire HP1 1QQ **Tel: 01442 233345**  
**Eaton Bray Office:** 2a Wallace Drive, Eaton Bray, Dunstable LU6 2DF **Tel: 01525 220605**  
**Kings Langley Office:** 1 High Street, Kings Langley, Hertfordshire WD4 8AB **Tel: 01923 936900**  
**Associated London Office:** 121 Park Lane, Mayfair, London W1K 7QG **Tel: 020 7079 1595**  
[www.castlestateagents.co.uk](http://www.castlestateagents.co.uk)



Castles