



Castles

OLD MILL GARDENS  
Berkhamsted, HP4 2NZ

# OLD MILL GARDENS

## Berkhamsted, HP4 2NZ

### Offers IEO £350,000

(Shared Freehold)



CASTLES ESTATE AGENTS are pleased to welcome this stylish two-bedroom apartment on the first floor, perfectly situated in the heart of Berkhamsted. Upon entering, you're greeted by a spacious hallway, complete with a storage cupboard, setting the tone for the apartment's thoughtful design.

The inviting living room boasts a large window that fills the space with natural light, beautifully complemented by pale grey carpet and crisp white walls for a fresh, airy feel. The bright, contemporary kitchen features sleek beech-effect cabinetry, cream floor tiles, and classic white tiled splashbacks, creating a clean and functional cooking space.

Retreat to the spacious master bedroom, which offers ample storage with a range of fitted wardrobes and a large window for a serene, light-filled atmosphere. The second bedroom is a generously sized double, ideal for guests, a home office, or a growing family. The bathroom is fitted with a modern white suite, complete with convenient shelving for added storage.

Step outside to enjoy the tranquil communal gardens that back directly onto the picturesque canal, adding a touch of nature to your everyday life. Resident parking is available, adding further ease to this desirable home. This apartment offers the perfect blend of style, comfort, and convenience in a prime Berkhamsted location.

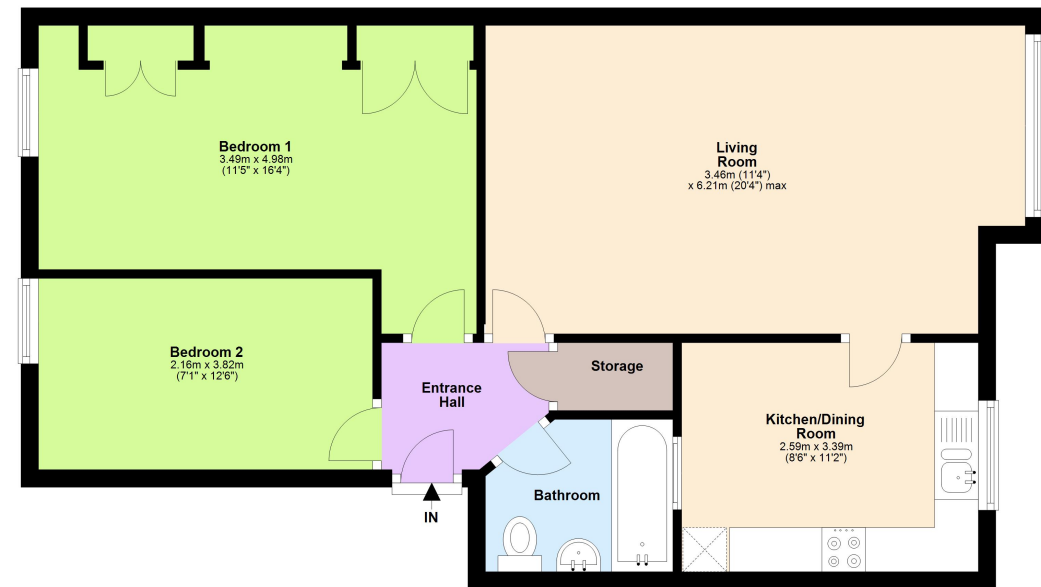
Tenure: Shared Freehold

Council Tax Band: C

EPC Rating: C

### First Floor

Approx. 61.6 sq. metres (663.2 sq. feet)



Total area: approx. 61.6 sq. metres (663.2 sq. feet)

This floorplan is not to scale. It's for guidance only and accuracy is not guaranteed.  
Plan produced using PlanUp.

#### Please Note:

We have not tested any apparatus, fixtures, fittings or services. Interested parties must undertake their own investigation into the working order of these items.

All measurements are approximate and photographs provided are for guidance only.

**Berkhamsted Office:** 148 High Street, Berkhamsted, Hertfordshire HP4 3AT **Tel: 01442 865252**

**Boxmoor Office:** 33 St John's Road, Hemel Hempstead, Hertfordshire HP1 1QQ **Tel: 01442 233345**

**Eaton Bray Office:** 2a Wallace Drive, Eaton Bray, Dunstable LU6 2DF **Tel: 01525 220605**

**Kings Langley Office:** 1 High Street, Kings Langley, Hertfordshire WD4 8AB **Tel: 01923 936900**

**Associated London Office:** 121 Park Lane, Mayfair, London W1K 7QG **Tel: 020 7079 1595**

[www.castlestateagents.co.uk](http://www.castlestateagents.co.uk)



# Castles