

Castles

ROSEWOOD COURT  
Fields End, Hemel Hempstead HP1 2TQ



# ROSEWOOD COURT

## Fields End, Hemel Hempstead HP1 2TQ

Tenure: Freehold  
Council Tax Band: C  
EPC Rating: C

**£285,000**  
(Freehold)



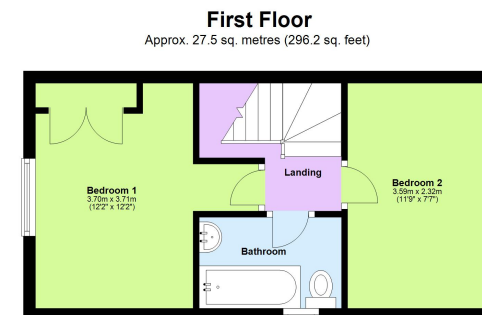
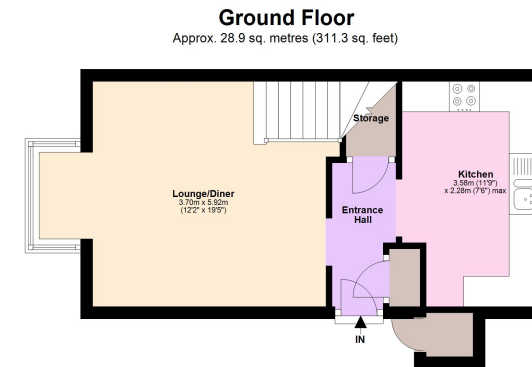
\*\*No Upper Chain\*\*

A very well presented TWO BEDROOM CLUSTER HOME located in FIELDS END on the edge of Hemel Hempstead.

This must see property has been well maintained and features include; Entrance Hall, Lounge/Diner, Re-Fitted Kitchen & Bathroom, TWO BEDROOMS, Gas Central Heating system, Outside Space & ALLOCATED PARKING for TWO VEHICLES.

**Berkhamsted Office:** 148 High Street, Berkhamsted, Hertfordshire HP4 3AT **Tel: 01442 865252**  
**Boxmoor Office:** 33 St John's Road, Hemel Hempstead, Hertfordshire HP1 1QQ **Tel: 01442 233345**  
**Eaton Bray Office:** 2a Wallace Drive, Eaton Bray, Dunstable LU6 2DF **Tel: 01525 220605**  
**Kings Langley Office:** 1 High Street, Kings Langley, Hertfordshire WD4 8AB **Tel: 01923 936900**  
**Associated London Office:** 121 Park Lane, Mayfair, London W1K 7QG **Tel: 020 7079 1595**

[www.castlestateagents.co.uk](http://www.castlestateagents.co.uk)



Total area: approx. 56.4 sq. metres (607.5 sq. feet)

This floorplan is not to scale. It's for guidance only and accuracy is not guaranteed.  
Plan produced using PlanUp.

**Please Note:**

We have not tested any apparatus, fixtures, fittings or services. Interested parties must undertake their own investigation into the working order of these items.

All measurements are approximate and photographs provided are for guidance only.



# Castles