



Castles

GLENVIEW ROAD  
Boxmoor, Hemel Hempstead HP1 1TE

# GLENVIEW ROAD

Boxmoor, Hemel Hempstead HP1 1TE

**£450,000**  
(Freehold)

Castles



NO UPPER CHAIN! We are thrilled to present this Three Bedroom End of Terrace home in the heart of Boxmoor.



This well-maintained home offers spacious living with a bright, inviting Lounge and a separate, fully equipped Kitchen perfect for culinary adventures.

Upstairs, you will find a generously sized Principle Bedroom complete with an En-Suite Shower Room and built-in wardrobes, a second Double Bedroom with ample space, a cozy Single Bedroom/Study Room and a modern Family Bathroom.

The property also features Off-Road Parking at the rear, a real asset in this popular area.

## Specifications

- NO UPPER CHAIN!
- END OF TERRACE
- 3 BEDROOMS
- 1 RECEPTION ROOM
- 2 BATHROOMS
- OFF STREET PARKING
- SOUGHT AFTER LOCATION



Step outside to enjoy the private, enclosed Rear Garden, perfect for relaxing, entertaining, or family playtime.



#### **A little about the corner of the world we call home...**

Located 24 miles north of London, Hemel Hempstead and the surrounding villages offer a great place to live whilst being close enough to the City to have a commutable journey for work or pleasure. London Euston can be reached in as little as 25 minutes from Hemel Hempstead station. The town is also ideally placed for road links with the M1, M25 and A41 motorways all accessed from the Town within just a few minutes, London Heathrow and London Luton airports are also less than 40 minutes away.

Historically significant Hemel Hempstead dates back almost 1000 years, the town has a great selection of character properties

along with many newer styles which were added after the Second World War. Hemel Hempstead sits within the Gade Valley and is surrounded by the Chiltern Hills which offer some of the best open countryside, much of which is classed as an area of outstanding natural beauty. Hemel Hempstead is a great place to raise a family with some of the finest state and independent Schools anywhere in the country. The town also has a great array of leisure facilities such as the Snow Centre, XC Centre, Public Swimming Pools, 17 Screen Cinema plus lots of restaurants, pubs and bars. Just a few minutes drive way is the City of St Albans, market town of Berkhamsted and the larger shopping town of Watford.

**Please Note:**

We have not tested any apparatus, fixtures, fittings or services. Interested parties must undertake their own investigation into the working order of these items.

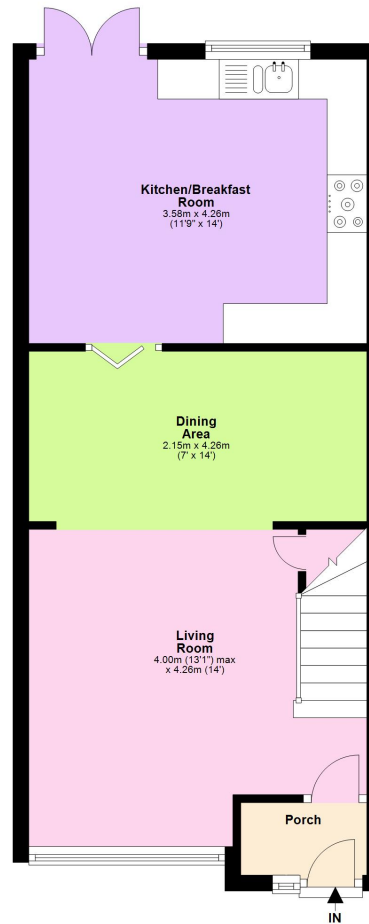
All measurements are approximate and photographs provided are for guidance only.

Tenure: Freehold

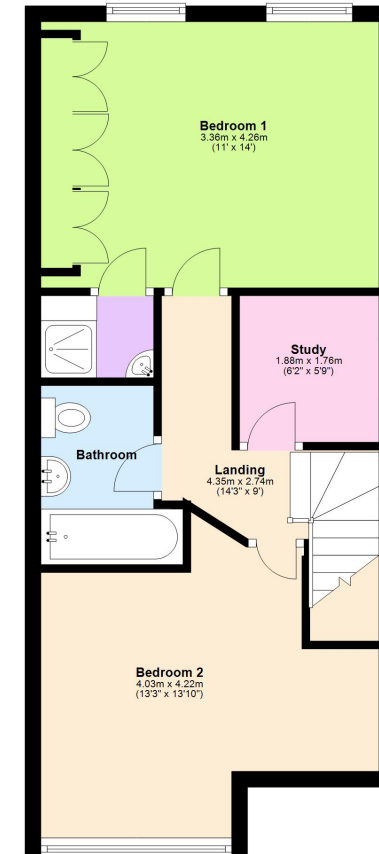
Council Tax Band: D

EPC Rating: C

**Ground Floor**  
Approx. 42.9 sq. metres (461.6 sq. feet)



**First Floor**  
Approx. 42.6 sq. metres (458.2 sq. feet)



Total area: approx. 85.5 sq. metres (919.8 sq. feet)

This floorplan is not to scale. It's for guidance only and accuracy is not guaranteed.  
Plan produced using PlanUp.

**Berkhamsted Office:** 148 High Street, Berkhamsted, Hertfordshire HP4 3AT **Tel: 01442 865252**

**Boxmoor Office:** 33 St John's Road, Hemel Hempstead, Hertfordshire HP1 1QQ **Tel: 01442 233345**

**Eaton Bray Office:** 2a Wallace Drive, Eaton Bray, Dunstable LU6 2DF **Tel: 01525 220605**

**Kings Langley Office:** 1 High Street, Kings Langley, Hertfordshire WD4 8AB **Tel: 01923 936900**

**Associated London Office:** 121 Park Lane, Mayfair, London W1K 7QG **Tel: 020 7079 1595**

[www.castlestateagents.co.uk](http://www.castlestateagents.co.uk)



Castles