



Castles

SOUTH HILL ROAD  
Hemel Hempstead HP1 1JB



# SOUTH HILL ROAD

## Hemel Hempstead HP1 1JB

**£650,000**  
(Freehold)

# Castles



This beautifully extended 4 Bedroom home is the perfect blend of comfort and luxury.

 4  2  1  Resident

This extended property boasts 4 Bedrooms, 2 Reception Rooms, 1 Bathroom and downstairs Cloakroom. Bright, cosy, and stylish with a well-maintained Garden and Resident Parking.

The house has been fully renovated and extended by the current owners and offers a stunning Kitchen/Dining/Family area making it the perfect place to unwind all meticulously maintained to a high standard.

The property features, Lounge, Cloakroom, Utility Room, Kitchen/Diner and Family area with bi-folding doors leading to the private Rear Garden. On the first floor is 3 Bedrooms and the Family Bathroom with stairs to the second floor offering another lovely Double Bedroom.

### Specifications

- 4 BEDROOMS
- 2 RECEPTIONS
- OPEN PLAN KITCHEN/DINER
- DOWNSTAIRS WC
- UTILITY ROOM
- RESIDENT PARKING
- BEAUTIFULLY EXTENDED





The property offers a long Garden, ideal for outdoor entertaining or relaxation, as well as Resident Parking for convenience.



#### **A little about the corner of the world we call home...**

Located 24 miles north of London, Hemel Hempstead and the surrounding villages offer a great place to live whilst being close enough to the City to have a commutable journey for work or pleasure. London Euston can be reached in as little as 25 minutes from Hemel Hempstead station. The town is also ideally placed for road links with the M1, M25 and A41 motorways all accessed from the Town within just a few minutes, London Heathrow and London Luton airports are also less than 40 minutes away.

Historically significant Hemel Hempstead dates back almost 1000 years, the town has a great selection of character properties

along with many newer styles which were added after the Second World War. Hemel Hempstead sits within the Gade Valley and is surrounded by the Chiltern Hills which offer some of the best open countryside, much of which is classed as an area of outstanding natural beauty. Hemel Hempstead is a great place to raise a family with some of the finest state and independent Schools anywhere in the country. The town also has a great array of leisure facilities such as the Snow Centre, XC Centre, Public Swimming Pools, 17 Screen Cinema plus lots of restaurants, pubs and bars. Just a few minutes drive way is the City of St Albans, market town of Berkhamsted and the larger shopping town of Watford.

**Please Note:**

We have not tested any apparatus, fixtures, fittings or services. Interested parties must undertake their own investigation into the working order of these items.

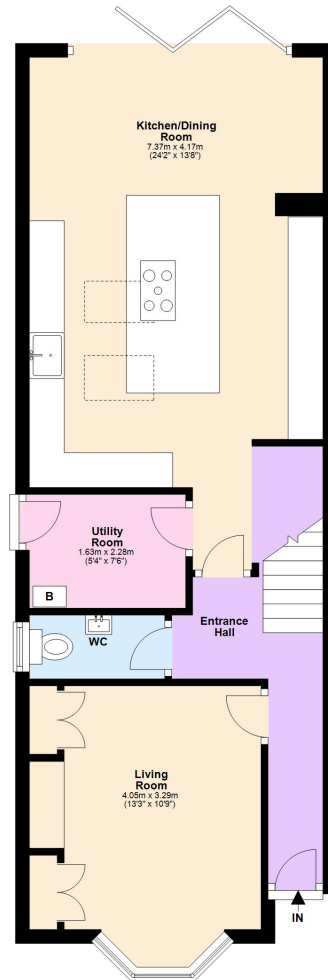
All measurements are approximate and photographs provided are for guidance only.

Tenure: Freehold

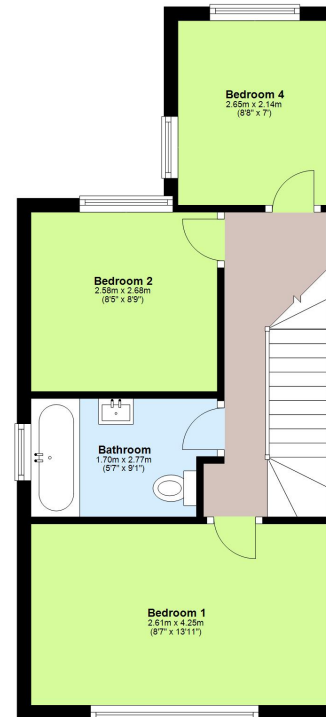
Council Tax Band: C

EPC Rating: E

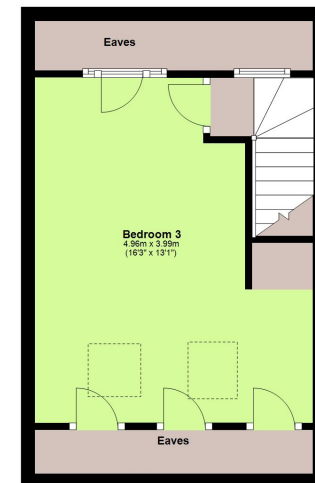
**Ground Floor**  
Approx. 52.1 sq. metres (560.3 sq. feet)



**First Floor**  
Approx. 36.0 sq. metres (388.0 sq. feet)



**Second Floor**  
Approx. 19.2 sq. metres (206.3 sq. feet)



Total area: approx. 107.3 sq. metres (1154.5 sq. feet)

This floorplan is not to scale. It's for guidance only and accuracy is not guaranteed.  
Plan produced using PlanUp.

**Berkhamsted Office:** 148 High Street, Berkhamsted, Hertfordshire HP4 3AT **Tel: 01442 865252**

**Boxmoor Office:** 33 St John's Road, Hemel Hempstead, Hertfordshire HP1 1QQ **Tel: 01442 233345**

**Eaton Bray Office:** 2a Wallace Drive, Eaton Bray, Dunstable LU6 2DF **Tel: 01525 220605**

**Kings Langley Office:** 1 High Street, Kings Langley, Hertfordshire WD4 8AB **Tel: 01923 936900**

**Associated London Office:** 121 Park Lane, Mayfair, London W1K 7QG **Tel: 020 7079 1595**

[www.castlestateagents.co.uk](http://www.castlestateagents.co.uk)



Castles