



Castles

CASTLE STREET
Berkhamsted, HP4 2BQ

CASTLE STREET

Berkhamsted, HP4 2BQ

£500,000
(Freehold)



PERIOD CHAIN-FREE PROPERTY! This charming character home is located in the heart of Berkhamsted, offering excellent rail connections to London and beyond.

The house showcases period features, including exposed beams, original doors, and windows. Externally, it has been recently redecorated and is situated opposite the picturesque St. Peter's Church.

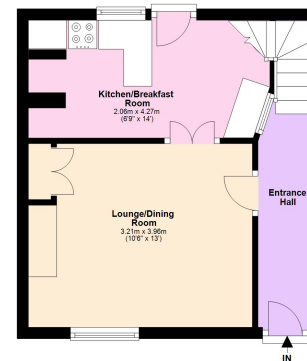
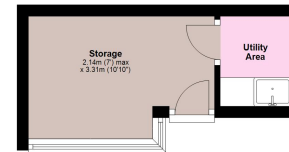
On the ground floor, the living room, with its exposed beams, leads to a cottage-style kitchen with views of the courtyard garden and outbuilding. With some minor upgrades, this outbuilding could serve as an ideal home office.

The upper floor comprises a spacious double bedroom, a single bedroom suitable for use as a home office, and a four-piece bathroom. The enclosed courtyard garden at the rear provides a lovely outdoor space, with gated access for pedestrians or bicycles.

Tenure: Freehold
Council Tax Band: C
EPC Rating: TBC

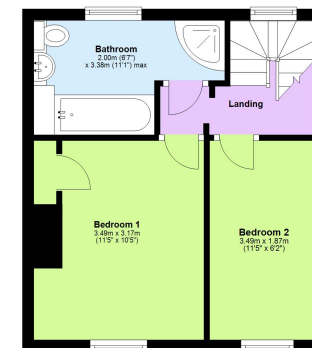
Ground Floor

Approx. 35.6 sq. metres (383.1 sq. feet)



First Floor

Approx. 28.4 sq. metres (306.0 sq. feet)



Total area: approx. 64.0 sq. metres (689.1 sq. feet)

This floorplan is not to scale. It's for guidance only and accuracy is not guaranteed.
Plan produced using PlanUp.

Please Note:

We have not tested any apparatus, fixtures, fittings or services. Interested parties must undertake their own investigation into the working order of these items.

All measurements are approximate and photographs provided are for guidance only.

Berkhamsted Office: 148 High Street, Berkhamsted, Hertfordshire HP4 3AT **Tel: 01442 865252**

Boxmoor Office: 33 St John's Road, Hemel Hempstead, Hertfordshire HP1 1QQ **Tel: 01442 233345**

Eaton Bray Office: 2a Wallace Drive, Eaton Bray, Dunstable LU6 2DF **Tel: 01525 220605**

Kings Langley Office: 1 High Street, Kings Langley, Hertfordshire WD4 8AB **Tel: 01923 936900**

Associated London Office: 121 Park Lane, Mayfair, London W1K 7QG **Tel: 020 7079 1595**

www.castlestateagents.co.uk



Castles